

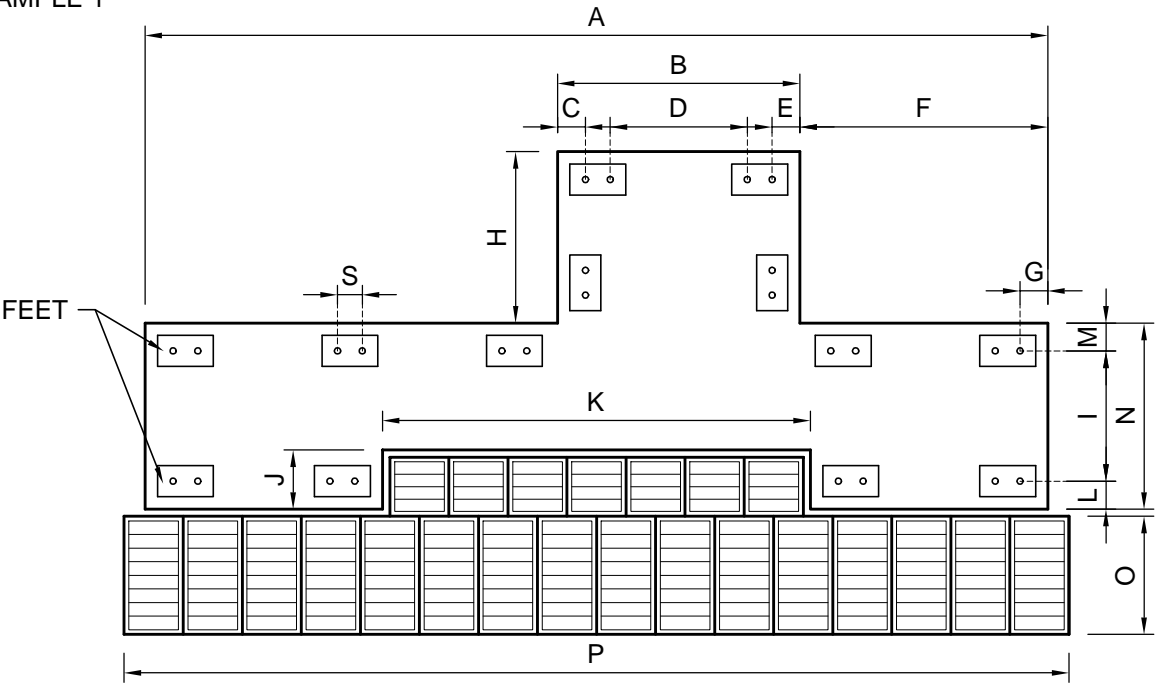
INFORMATION ON UNDER-MACHINE FLOORING
LINE 1000 AND SYSTEM LSC

The combined system is used when it is not possible to utilize modules that are all the same

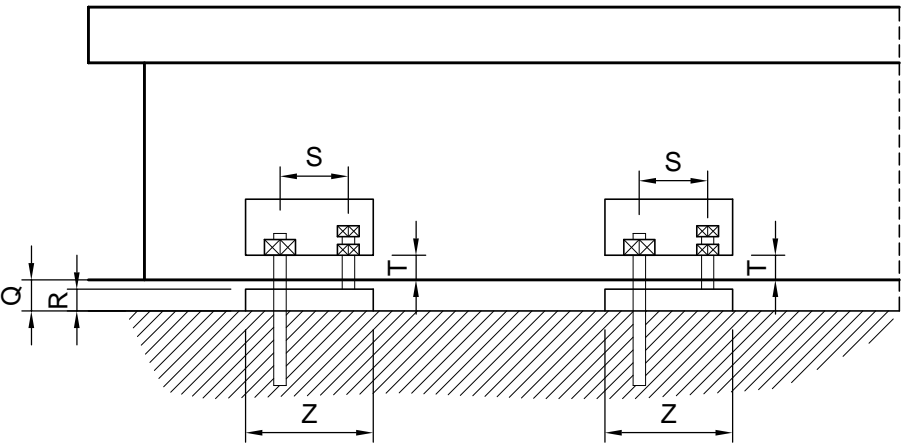
**TO ASK FOR A
 QUOTATION PLEASE
 SEND:**

- 1) MACHINE FOOTPRINT;
- 2) DISTANCE OF FEET FROM OUTER EDGE OF BASE;
- 3) SIZE OF FEET AND THEIR DISTANCE APART;
- 4) N.B. SPECIFY THE AREA OUTSIDE THE MACHINE PERIMETER WHERE THE FLOORING WITH PLATFORM WILL BE PLACED (FOR FLOORING AREA).

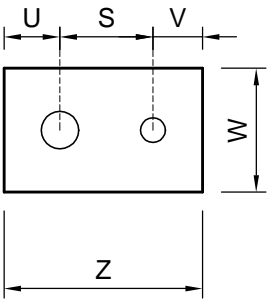
EXAMPLE 1



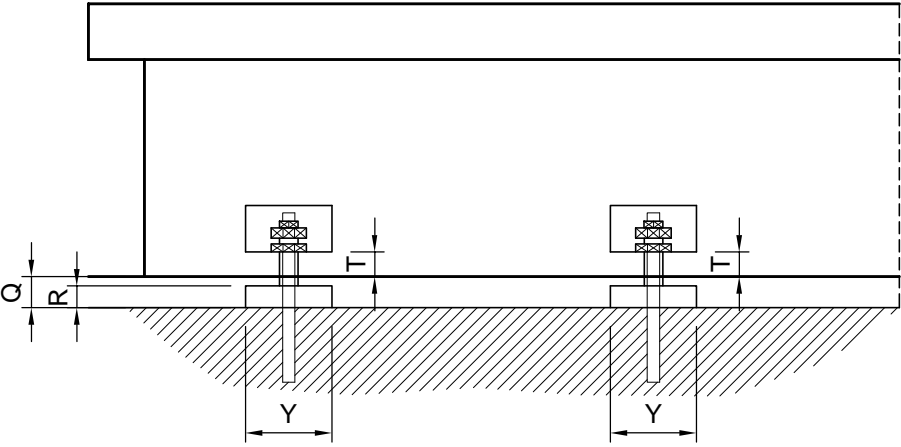
EXAMPLE 2



FEET



EXAMPLE 3



FEET

